

Keeping Vigil

Words and Music by
JIM CROEGAERT

Driving ♩ = 116

Guitar Capo 3-

G



B♭

Am/G



Cm/B♭

G



B♭

Am/G



Cm/B♭

Piano -

G



B♭

Am/G



Cm/B♭

G



B♭

Am/G



Cm/B♭

§

G



B♭

C



E♭

G



B♭

G



B♭

In a hall out-side a hos-pi-tal room a moth-er looks through the
Bro-ken pic-ture on the liv-ing room floor lab-oured breath-ing—

D




F

C2



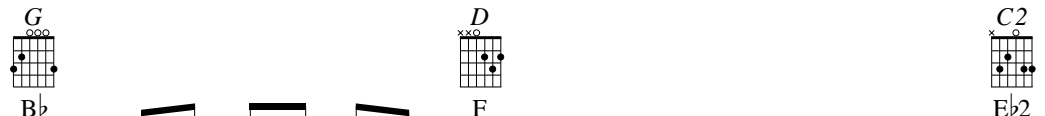
E♭2

win-dow to— her bab-y's face and takes her place
sounds of war— a bo-dy's wracked un-der at-tack




 keep ing vi - gil In this dark and un - en light - end hour

 Work - ing puz - zles in a par - en - tal mind



 sep - ar - at - ed by the med - ic - al power She reach - es in and touch -

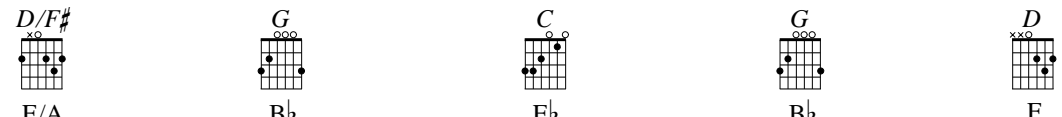
 an emp - ty place be - ing left be - hind Heart reach - es out through



 es skin keep - ing vi - gil And a can - dle burns

 the doubt

mf



 - with a flame of love and a strength un - like an - y oth - er

D/F#
F/A

G
Bb

D/F#
F/A

G
Bb

C
Eb

G
Bb

It may not — pre - vail — in the mo - ment — but when all's said — and — done —

D
F

Am7
Cm7

D/F#
F

it's a lov - er's — world A lov - er's —

mp

Am7
Cm7

D/F#
F

To Coda ⊕

G
Bb

Am/G
Cm/Bb

world

f

G
Bb

Am/G
Cm/Bb

D.S. al Coda

CODA \emptyset

Am7



Cm7

D/F#



F

G



Bb

C

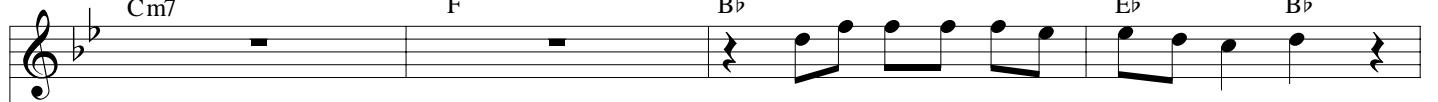


Eb

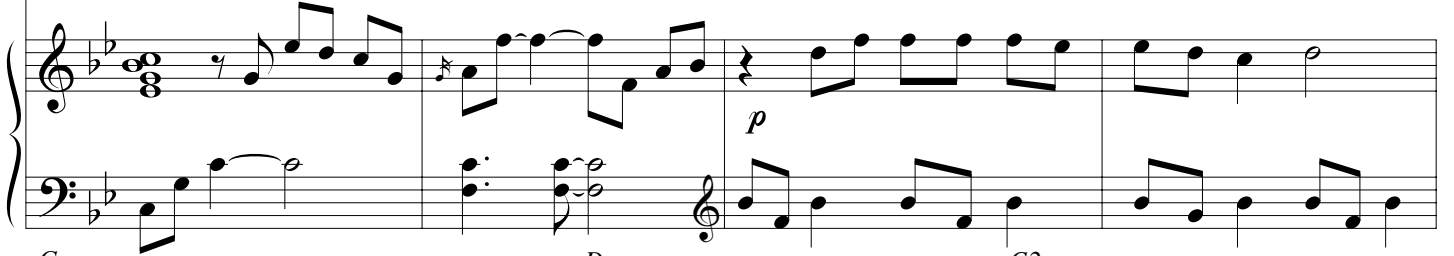
G



Bb



In a gar-den at the edge of the earth



p

G



Bb

D



F

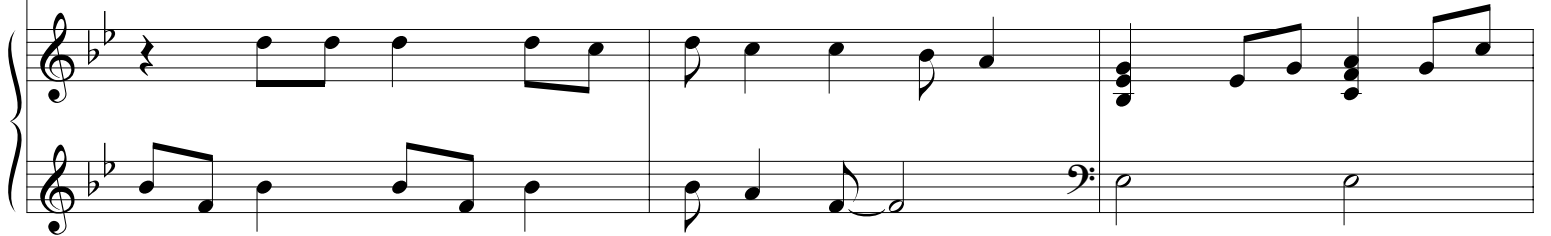
C2



Eb2



some - one wrest - les with a death or birth — which is it now? a blood -



G



Bb

D



F

G



Bb

C



Eb

G



Bb



y brow keep - ing vi - gil Walk - ing on wa - ter was the eas - i - er part



G



Bb

D



F

C2

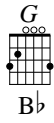


Eb2

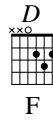


Tak - ing dark - ness out of ev - er - y heart — in - to his own — this is

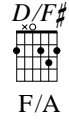




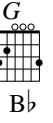
B \flat



F



F/A

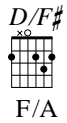


B \flat

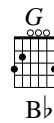
a - lone

keep - ing vi - gil

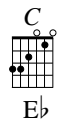
and a can - dle burns



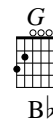
F/A



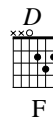
B \flat



E \flat

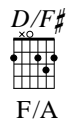


B \flat

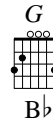


F

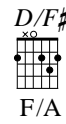
with a flame of love and a strength un - like an - y oth - er



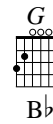
F/A



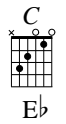
B \flat



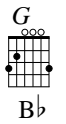
F/A



B \flat



E \flat



B \flat

and it will pre - vail in the end be - cause when all's said and done

1 *D* *D/F#* *G* 2 *Am7* *D/F#*
F *F/A* *Bb* *Cm7* *F*

— he's a lov - er — and a can - dle burns — world a lov - er's —
 it's a lov - er's —

Am7 *D/F#* *Am7* *D/F#*
Cm7 *F* *Cm7* *F*

world

Am7 *D/F#* *G* *Am/G*
Cm7 *F* *Bb* *Cm/Bb*

f

G *Am/G*
Bb *Cm/Bb*

Repeat until faded

Licensing Facts

When you purchase Steve Bell's published music, no licensing is required for personal use. Church/congregational use requires a license with CCLI or Signpost Music.

The purpose of licensing fees is simply to help sustain those whose dedication and work make songs like this available to the wider community.

To license your music for church congregational use only, contact CCLI or Signpost Music.

www.ccli.com

Signpost Music

email: signpost@signpostmusic.com

Toll free: 1.800.854.3499

For more information about licensing Steve Bell's music for any other public performance or broadcast, visit www.stevebell.com/contact/music-rights/ or call Signpost Music.